



## AMAZING GRACE: AN ADVENTURE AT SEA

### THE HISTORY DETECTIVE

Use a magnifying glass to find the following characters in this image of life on a sailing ship in the late 1800s:

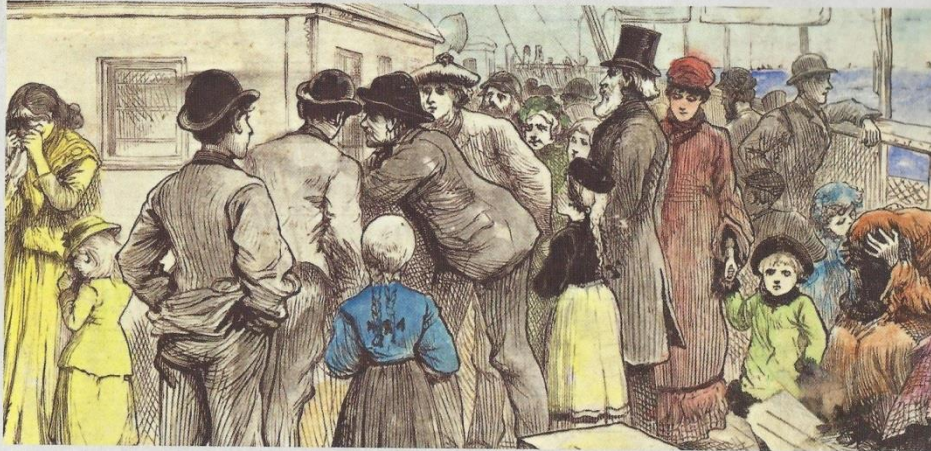
- A lookout
- The captain steering the boat
- A girl with a pull-along toy
- A man with a loud speaker
- People playing a game of quoits
- Someone checking for sharks
- A man reading a book
- A set of binoculars
- Another ship



National Library of Australia

nla.pic-an6330410-v

## HISTORICAL STORYTELLING



*Starting the long journey*

### *The passengers*

For passengers like Annie Simpson, life on board a small ship was cramped and uncomfortable, especially when the sea was rough. Many passengers suffered from seasickness, which made them feel nauseous, dizzy and very tired. Crew members were usually unaffected, as they were used to the movement of the boat.

Passengers were accommodated in small cabins and slept on narrow bunks that were placed one above the other, sometimes three or four high. These bunks were just over half a metre wide—

about the width of a small desk. The only place where children could play with their toys was on the deck.

However, the larger sailing and steam ships that made the long voyage across the ocean to and from Australia had dining rooms and saloons for their passengers, and large deck areas. So, when the weather was good, life on board such ships was quite enjoyable, and often included games, dances and other forms of entertainment.

- Read this information from *Amazing Grace: An Adventure at Sea* about being a passenger on a small ship in the 1800s.

- Write a story about one of the characters in the pictures featured here:

- Where are they sailing to?
- How do they feel about it?
- What adventures do they have?

- You could write it as a historical romance, a comedy or a drama.

- Give your story a catchy title!



© **Stephanie Owen Reeder**

*Amazing Grace: An Adventure at Sea* (NLA Publishing)